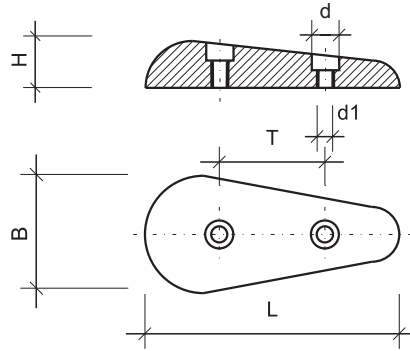


POVHE-NAVTIKA

LIST 1

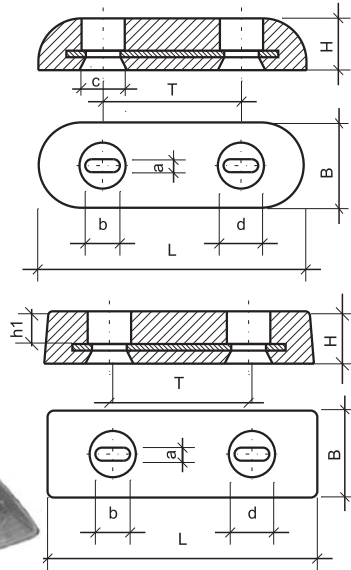
izdelava cink protektorjev,
pogonskih osi,
strojnih elementov in naprav

SOLZA 00.050-00.210



TIP	050	065	085	110	140	175	210
L	50	65	85	110	140	175	210
B	20	30	40	63	75	95	110
H	8	12	18	18	28	37	43
T	-	27	40	48	55	75	100
d	7.5	7.5	9.5	13.5	22	22	27
d1	4.5	4.5	5.5	6.5	10.5	11	12

VALJASTI, PRAVOKOTNI, PRIZMA 01.145 - 01.450



Z JEDROM

TIP	L	B	H	T	a	b	c	d	
360	360	80	40	200	12,5	30	40	40	⤿
440	440	100	40	230	20	60	75	60	⤿
450	450	120	45	194	12,5	30	42	39	⤿
140	140	60	21	75	12	22	25	25	□
145	145	70	25	75	12	22	25	25	□
265	265	85	30	135	12	45	47	47	□
270	270	65	30	125	12	65	77	75	⤿

Pridržujemo si pravico do sprememb!

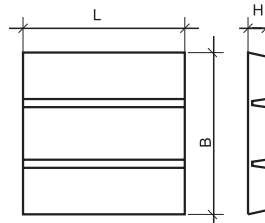
PRAVOKOTNI 01.060 - 01.299

KLIN 01.195



U - ugreznjeni

PLOŠČA 01.190



PLOŠČA 01.310

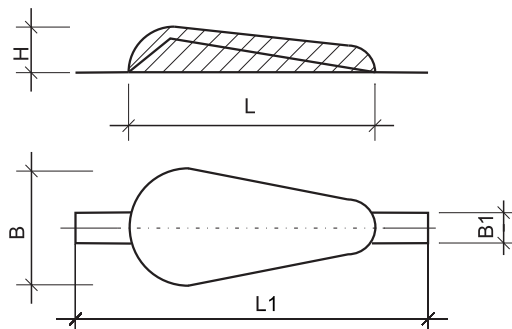


BREZ JEDRA

TIP	L	B	H	T	a	b	d	h1
060	60	60	22	20	8	8	18	13
090	90	50	18	50	7	7	U	U
130	130	50	18	76	7	7	U	U
150	150	75	22	80	11	11	26	13
195	190	75	22	80	20	20	30	13
220	220	105	28	/	/	/	/	/
240	240	50	18	/	/	/	/	/
299	300	75	22	/	/	/	/	/
300	300	150	30	/	/	/	/	/
301	300	150	23	/	/	/	/	/
310	360	50	30	/	/	/	/	/

*se lomi!

SOLZA S TRAKOM 00.120-00.235

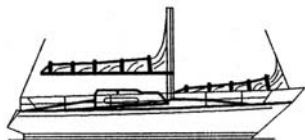


TIP	120	165	200	235
L	120	165	200	235
L1	190	240	300	335
H	24	30	35	50
B	50	73	85	95
B1	15	20	25	30

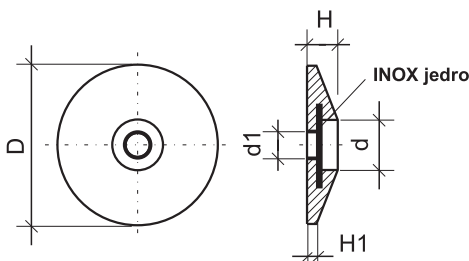
URL: povhenavtika.4mg.com
e-mail: povhenavtika@gmail.com

POVHE

VINJE 122 1262 DOL PRI LJUBLJANI, SLO
TEL/FAX: 01 5647-392 GSM: 041 667-688



KROG 02.042-02.130

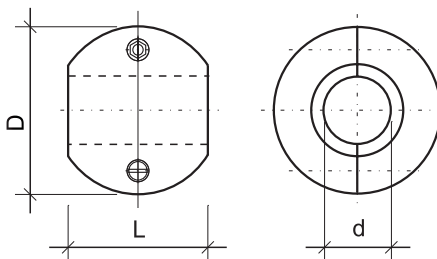


INOX JEDRO

TIP	042	060	070	090	110	130
D	42	60	70	90	110	130
H	8	12	14	16	20	22
H1	2	2	3	3	4	4
d	13.5	19	19	21	24	27
d1	7	9	9	9	11	11

z imbus vijaki in varovalno inox matico

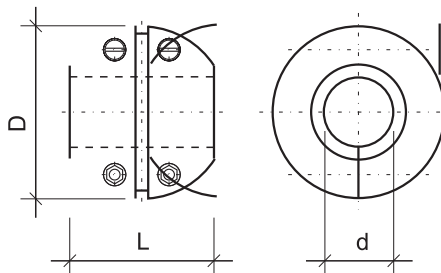
KROGLA 03.022-03.035



TIP	022	025	028	030	032	034	035
d	22	25	28	30	32	34	35
D	54	54	54	60	60	60	60
L	45	45	45	47	47	47	47

z imbus vijaki in varovalno inox matico

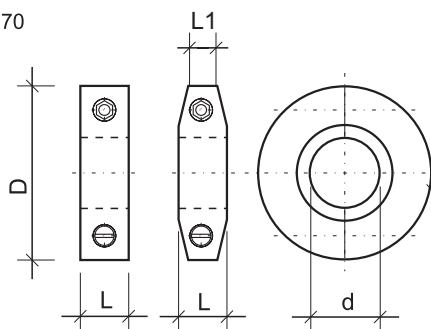
KROGLA 03.135-03.150



TIP	135	138	140	145	148	150	260	395
d	35	38	40	45	48	50	60-90	95-140
D	70	70	70	85	85	85	140	190
L	70	70	70	74	74	74	140	180

z imbus vijaki in varovalno inox matico

OBROČ 04.022-04.035, 04.160-04.170

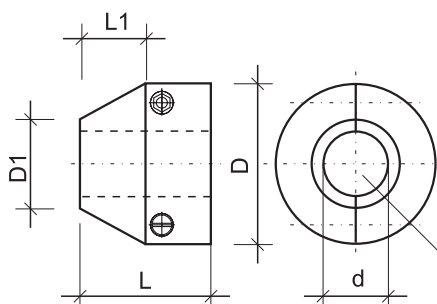


TIP	022	025	028	030	032	034	035	140	150	160	170
d	22	25	28	30	32	34	35			1*	2*
D	62	62	62	70	70	70	70	80	90	105	115
L	17	17	17	20	20	20	20			50	53
L1	12	12	12	13	13	13	13				

z imbus vijaki in varovalno inox matico

1* d=60÷70 2* d=70÷85

OBROČ 04.135 - 04.150

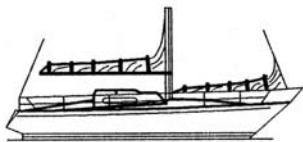


TIP	135	150
d	1*	2*
D	75	93
D1	49	70
L	44	56
L1	22	24

z imbus vijaki in varovalno inox matico

1* d=35-49
2* d=50-60

Pridržujemo si pravico do sprememb!



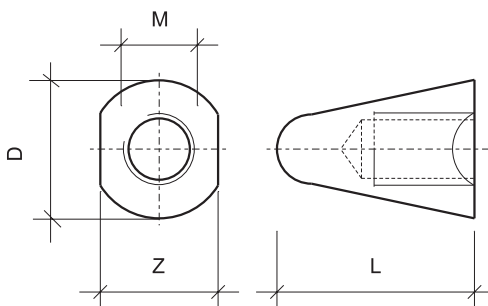
TR

POVHE-NAVTIKA

LIST 3

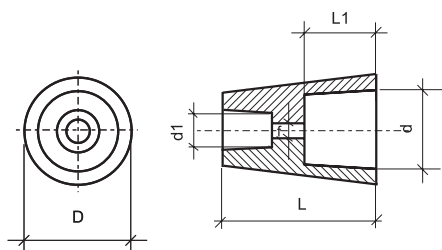
izdelava cink protektorjev,
pogonskih osi,
strojnih elementov in naprav

MATICA 05.313 - 05.418 06.518 - 06.620



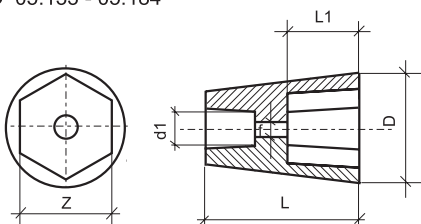
TIP	313	418	518	620
D	32	41	51	61
L	40	50	62	60
Z	27	37	46	55
M	12-20	18-24	18-27	20-30

POKROV Z NOTRANJIM KONUSOM 05.033 - 05.090



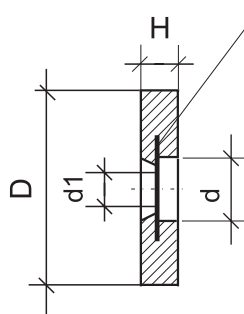
TIP	033	040	045	050	060	072	075	084	090
D	33	42	46	51	61	73	75	84	90
d	25	32	38	42	47	57	65	71	76
d1	12	15	16	16	24	27	27	27	27
f	6,5	8,5	8,5	8,5	11	11	11	11	11
L1	20	26	28	29	32	35	41	57	75
L	40	55	56	65	75	85	87	100	107

POKROV S ŠESTOGLATO VDOLBINO 05.133 - 05.184



TIP	133	140	145	150	160	172	175	184
D	33	42	46	50	61	72	75	84
Z	22	27	32	36	41	46	50	56
d1	12	15	16	16	24	27	27	27
f	6,5	8,5	8,5	8,5	11	11	11	11
L	40	55	56	65	75	85	87	99
L1	20	26	26	29	33	46	46	54

VALJ 02.135 - 02.230*



INOX JEDRO

TIP	135	136*+	180*200*	201*	220*	221*
D	135	135	180	200	200	220
H	30	50	30	30	20	30
d	47	47	47	47	47	47
d1	13	13	13	13	13	13

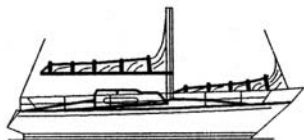
* Po naročilu
+ Z navojnim čepom

PALICE 00.010 - 00.020



TIP	010	012	016	020
D	10	12	16	20
L	240	240	240	240

Pridržujemo si pravico do sprememb!



POVHE-NAVTIKA

LIST 4

izdelava cink protektorjev,
pogonskih osi,
strojnih elementov in naprav

VOLVO 07.010

Serija 280



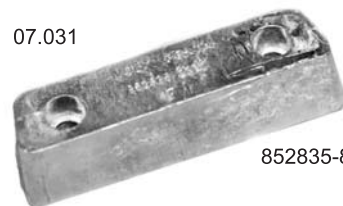
VOLVO 07.011

DP 290



VOLVO 07.031

DP 290



852835-8

VOLVO 07.032

DP X



872139-1

VOLVO 07.050

S DRIVE 110



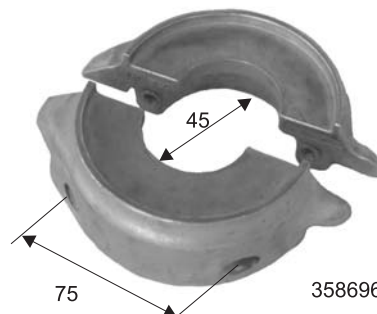
VOLVO 07.051

S DRIVE 120



VOLVO 07.049

SAIL DRIVE VP026



3586963

VOLVO SX 07.053



VOLVO SX 07.054



VOLVO SX 07.055



Pridržujemo si pravico do sprememb!

VOLVO 07.045



3858399

VOLVO 07.052

S 110 , S 120



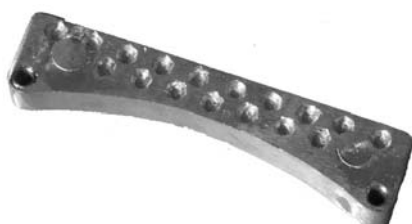
852018-1

VOLVO 07.021

serija 250, 270, 275



VOLVO 07.020



VOLVO 07.046

TRIM 270



VOLVO 07.030

250, 270, 280

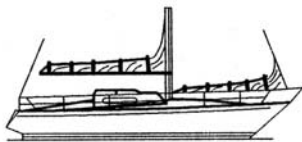


832598-7

URL: povhenavtika.4mg.com
e-mail: povhenavtika@gmail.com

POVHE

VINJE 122 1262 DOL PRI LJUBLJANI, SLO
TEL/FAX: 01 5647-392 GSM: 041 667-688



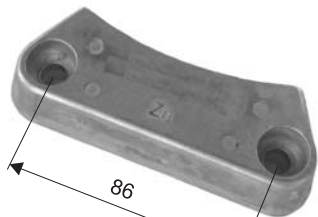
TR

POVHE-NAVIKA

izdelava cink protektorjev,
pogonskih osi,
strojnih elementov in naprav

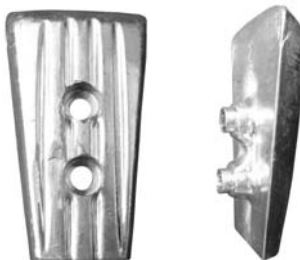
LIST 5

VOLVO DPH - DPR 07.033



Volvo koda 3588745

VOLVO DPH 07.034



Volvo koda 3588746/748/750

VOLVO DPH, DPR 07.035



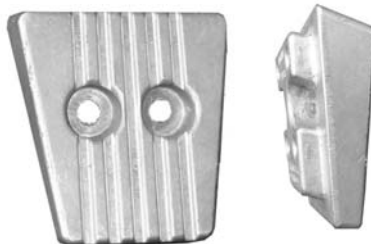
Volvo koda 3589875

VOLVO SXA, DPSA 07.036



Volvo koda 3888814 Zn, 3888813 Al

VOLVO SXA, DPSA 07.037



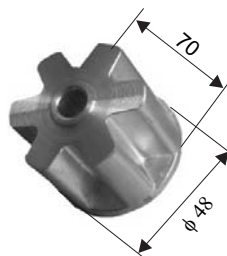
Volvo koda 3888817 Zn, 3888816 Al

VOLVO IPS 07.039



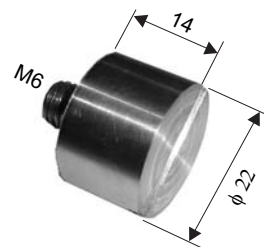
Volvo koda 40005875Al, 38888204 Zn

VOLVO IPS 2A ZVEZDA 07.038



Volvo koda 3593981

VOLVO SAIL DRIVE 100 07-048



VOLVO ČEP 07-631, 07-634



VOLVO ČEP 07-040



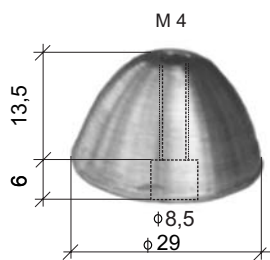
838929

VOLVO VLOŽEK IZPUHA, DPH, DPR 07-041



Volvo koda: 21700154 Zn

VOLVO BOW THRUSTER QL 07-056



Volvo koda 41100098

VOLVO BOW THRUSTER QL 07-057



Volvo koda 41100276

BP; SP; BPH
450
600
800
900
1200
1300
tunel 185-250mm

VOLVO 07-047



Volvo koda 872675 ; 872793

Po priporočilih tovarne
vgraditi na vse modele

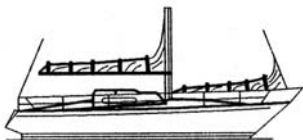
Montažni list
na voljo pri trgovcu

Pridržujemo si pravico do sprememb!

URL: povhenavtika.4mg.com
e-mail: povhenavtika@gmail.com

POVHE

VINJE 122 1262 DOL PRI LJUBLJANI, SLO
TEL/FAX: 01 5647-392 GSM: 041 667-688



MERCUISER ALPHA ONE/TWO 07.200
I. 95 →



MERCUISER - vsi modeli 07.170



MERCUISER 07.180
ALPHA IN BRAVO brez Meerkathode



MERCUISER ALPHA ONE/TWO 07.190



MERCUISER BRAVO - vsi modeli 07.210



MERCUISER BRAVO - vsi modeli 07.220



MERCUISER ALPHA ONE/TWO 07.172
I. 95 →



MERCUISER BRAVO ONE 07.212
I. 2000 →



OMC COBRA 07.300



MERCUISER BRAVO III 07.240
I. 2005 →



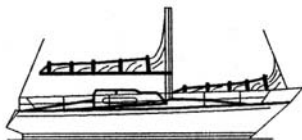
MERCUISER TDI 1,7 07.230



MERCUISER BRAVO III 07.225
I. 2005 →



Pridržujemo si pravico do sprememb!

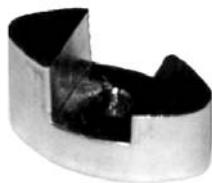


POVHE-NAVTIKA

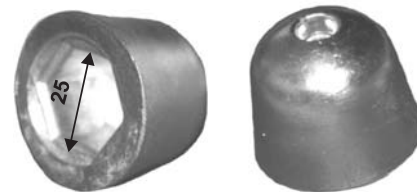
LIST 7

izdelava cink protektorjev,
pogonskih osi,
strojnih elementov in naprav

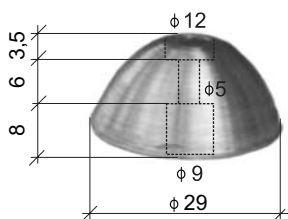
BOW THRUSTER KW3 07-135



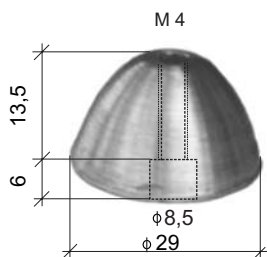
BOW THRUSTER 07-136

BOW THRUSTER 07-137 ϕ 50 h=42
07-141 ϕ 42 h=35

BOW THRUSTER 07-134



VOLVO BOW THRUSTER QL 07-056



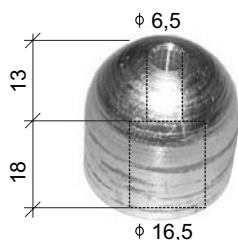
Volvo koda 41100098

VOLVO BOW THRUSTER QL 07-057

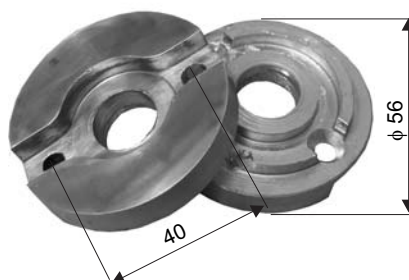
BP; SP; BPH
450
600
800
900
1200
1300
tunel 185-250mm

Volvo koda 41100276

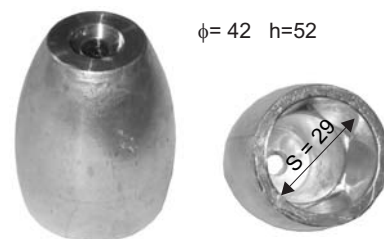
BOW THRUSTER KAPICA 07-133



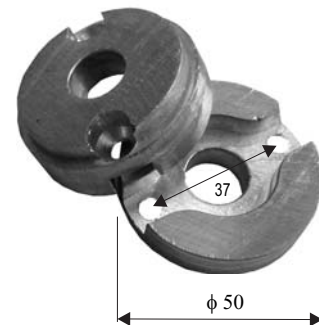
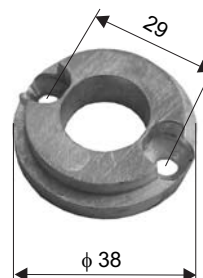
BOW THRUSTER VETUS 07-138



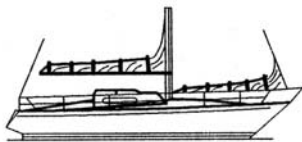
BOW THRUSTER WESMAR VORTEX 07.139

VETUS ϕ 70 / H=55 07-130

VETUS 07-131

 ϕ = 54 h=47VETUS ϕ =50 07-132VETUS ϕ =38 07-129

Pridržujemo si pravico do sprememb!



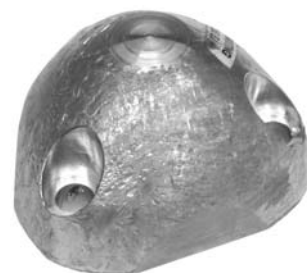
AUTOPROP H20 - Sail drive 06-070



AUTOPROP H20 - Shaft 06-071



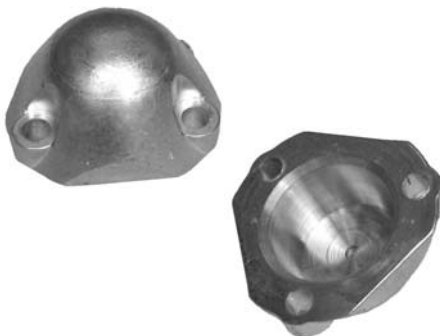
AUTOPROP H6 Shaft 06-078



AUTOPROP H5 - Sail drive 06-074



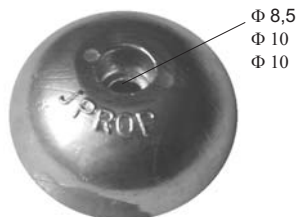
AUTOPROP H5 - Shaft 06-075



MAX PROP
 $\Phi 38$ 06.038
 $\Phi 42$ 06.042
 $\Phi 46$ 06.046



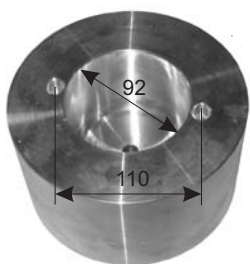
J PROP tip 60 h=27 06.060
 J PROP tip 80 h=33 06.061
 J PROP tip 90 h=37 06.062



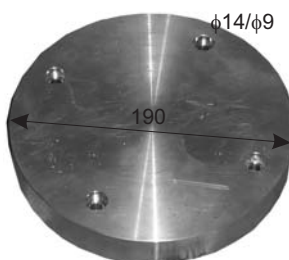
FLEKSOFOLD 06.080
 $\Phi 68$ za gred 40



KAPA MATICE h=100 $\Phi 180 \times 100$ 06-180
 PROPELERJA h=100 $\Phi 190 \times 100$ 06-190

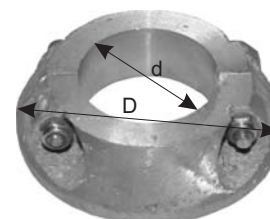


KAPA PROPELERJA $\Phi 190 \times 30$ 06.193



F MAX 3 d=42 D=93 06-052
 F MAX 4 d=46 D=93 06-056

h=27

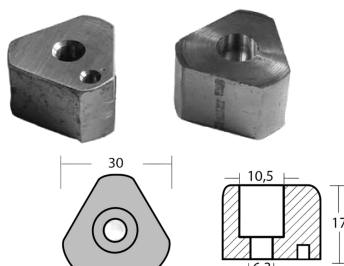


z Inox vijakom in inox varovalno matico

KAPA MATICE D=150 d=116 h=126 t=132 06-195
 PROPELERJA D=195 d=165 h=160 t=182 06-196

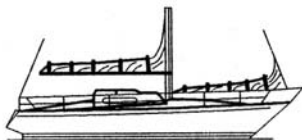


ZA PROPELER GORI 06-065
 Koda proizvajalca: 14074100



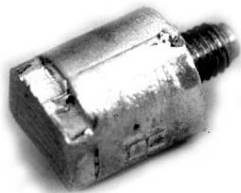
OBROČ GORI 06-066
 Koda proizvajalca: 1553000





POVHE-NAVTIKA

LIST 7b

izdelava cink protektorjev,
pogonskih osi,
strojnih elementov in napravYANMAR 07-080 l = 20 / M8
07-651 l = 37 / M8
07-652 l = 55 / M8

Ostale dimenzije glej list 10

YANMAR 07.658 LYLP 315-370 KM

hladilnik olja - vode
4 - kos / motor

119574-44150

YANMAR 07.660

intercooler
2 - kos motor

119574-18790

YANMAR 07.085



YANMAR 07.086



YANMAR adapter

07.087

KAMEWA z jedrom 07.320



KAMEWA 07.321



KAMEWA oval z jedrom 07.325

YAMAHA 07.060 - Zn anoda ϕ 24 x 7

07-061 - Al anoda

TOHATSU 2,5 do 8 HP
SUZUKI
YAMAHA 2,5 do 25 HP
MARINER 2,5 do 25 HP
SELVA 6 HP
HONDA 8 HP
MERCURYTOHATSU 07.062 - Al anoda ϕ 24 x 15
15 - 18 HP
25 - 40 HPMARINER - Al anoda ϕ 24 x 15
YAMAHA
HONDATOHATSU 07.063 Al - anoda
4-6 HP

Koda: 3H6-60218-0

TOHATSU 07.064 Al - anoda

9.9-18 HP 4 taktni



Koda: 3M2-60218-0

TOHATSU 07.065 Al - anoda

40-50 HP - noga
za motor do 140 HP

60218-0 original koda



Koda: 3B7-60218-1

TOHATSU 07.066 Al - anoda

60,70,90,120,140 HP - Trim 60218-1 original
koda
MERCURY 40 HP
EVINRUDE 40, 70 HP
SUZUKI 70,90,115,140 HP

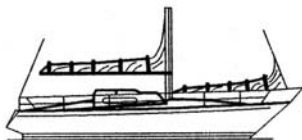
Koda: 307-60218-1

Pridržujemo si pravico do sprememb!

URL: povhenavtika.4mg.com
e-mail: povhenavtika@gmail.com

POVHE

VINJE 122 1262 DOL PRI LJUBLJANI, SLO
TEL/FAX: 01 5647-392 GSM: 041 667-688



RENAULT - DROFIN 07.090



Ostale dimenzije glej list 9

TOMOS 4,8 07-121



TOMOS 10 - 18 07.120



TORPEDO 07.160



DMB 07.165

Ostale dimenzije
glej list 10

DUCATI 07.150

Ostale dimenzije
glej list 10

AIFO 07-521, 07-523, 07-525, 07-527



Ostale dimenzije glej list 9

NANNI 07.140



Ostale dimenzije glej list 10

BMW 07.110

Ostale dimenzije
glej list 10YANMAR - MERCEDES
07.145Ostale dimenzije
glej list 10

CP ČEP z MS matico 07-670 do 07-684

Ostale dimenzije glej list 10

CUMMINS, G.M.,CATERPILLAR
07-540 - 07-567

Ostale dimenzije glej list 9

LOMBARDINI Z POGON NOGA 07-167



LOMBARDINI MARINE 07-168



Ostale dimenzije glej list 10

KOBOTA 07.668

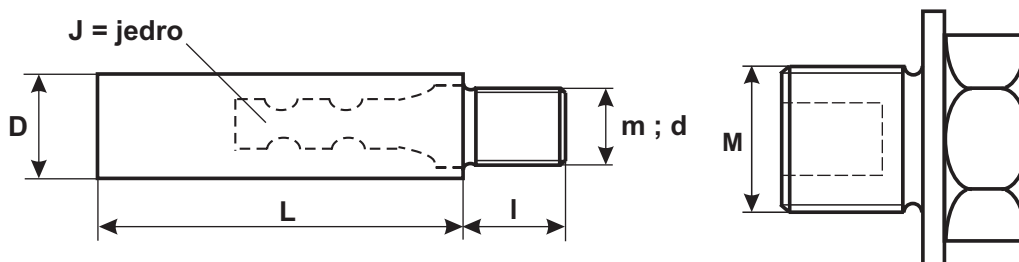
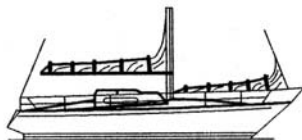


Ostale dimenzije glej list 10

LOMBARDINI Z POGON -
DVODELNI 07-169

LOMBARDINI - ADAPTER 07-166

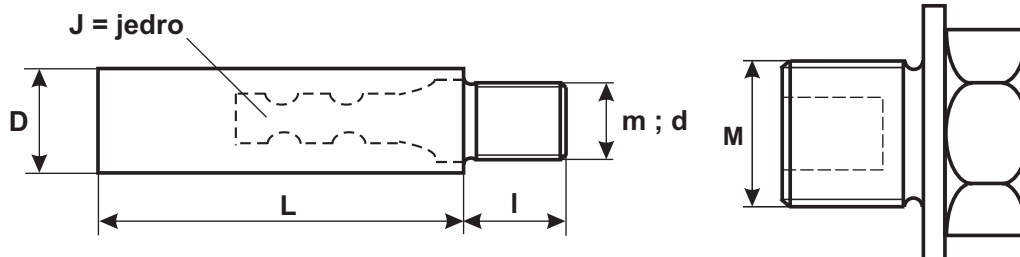
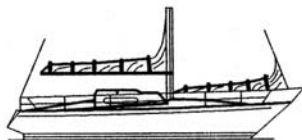




ČEPI BLOKA MOTORJA

IME	KODA	D	L	d	l	m	M	jedro
GENERAL MOTORS	07-500	12	40	-	10	3/8 UNC	-	
	07-501	12	40	-	10	3/8 UNC	3/8" NTP	
	07-502	16	54	-	12	7/16 UNC	-	
	07-503	16	54	-	12	7/16 UNC	1/2" NTP	
	07-504	18	54	-	15	5/8 UNC	-	
	07-505	18	54	-	15	5/8 UNC	3/4" NTP	
	07-506	18	85	-	15	5/8 UNC	-	
	07-507	18	85	-	15	5/8 UNC	3/4" NTP	
AIFO	07-520	10	18	7	8	-	-	
	07-521	10	18	7	8	-	M12 x 1,5	
	07-522	13	26	10,1	8	-	-	
	07-523	13	26	10,1	8	-	M16 x 1,5	
	07-524	14	26	12	8	-	-	
	07-525	14	26	12	8	-	M18 x 1,5	
	07-526	20	20	14	11	-	-	
	07-527	20	20	14	11	-	M28 x 1,5	
CATERPILLAR	07-540	10	38	-	11	1/4 UNC	-	
	07-541	10	38	-	11	1/4 UNC	1/4" G	
	07-542	10	55	-	11	1/4 UNC	-	
	07-543	10	55	-	11	1/4 UNC	1/4" G	
	07-544	12	40	-	10	3/8 UNC	-	
	07-545	12	40	-	10	3/8 UNC	3/8" G	
	07-546	14	33	-	12	5/16 UNC	-	
	07-547	14	26	12	7	-	-	
	07-548	16	41	-	9	7/16 UNF	-	
	07-549	16	41	-	9	7/16 UNF	1/2" G	
	07-550	16	63 (51)	-	13	3/8 UNC	-	
	07-551	16	63	-	13	3/8 UNC	1/2" G	
	07-552	22	20	-	11	5/8 UNF	-	
	07-553	22	20	-	11	5/8 UNF	3/4" G	
07-554	28	55	-	20	3/4 UNC	-		
07-555	28	55	-	20	3/4 UNC	1 1/4" G		
CUMMINS	07-560	10	20	-	8	M6	-	
	07-562	16	31	-	13	3/8 UNC	-	
	07-563	16	50	-	10	7/16 16g UNC	-	
	07-564	16	50	-	10	7/16 14g UNC	1/2" G	
	07-565	16	50	-	12	7/16 UNF	-	
	07-566	16	50	-	12	7/16 UNF	1/2" G	
	07-567	18	65	-	15	5/8UNC M16x1,5	-	
RENAULT	07-573	15	22	12	10	-	-	
	07-574	15	22	12	10	-	M18 x 1,5	
VM	07-585	14	20	-	10	M8	-	

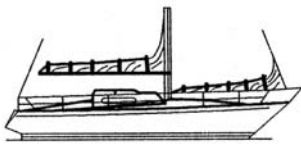
Pridržujemo si pravico do sprememb!



ČEPI BLOKA MOTORJA

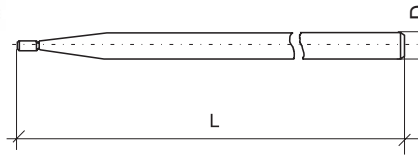
IME	KODA	D	L	d	l	m	M	jedro	opomba
LOMBORDINI	07-168	10	18	8	8	-	1/4" NTP		1/4" NTP
	07-602	14	26	12	7	-	1/2" G		
	07-603	14	30	10,1	9	10,1	M18x1,5		0090802840
DMB	07-165	30	16	30,3	6	-	-		
NANNI	07-140	10	18	8	8	-	M16 x 1,5		
DUCATTI	07-150	15	22	-	10	M8	-	J	
BMW	07-110	13	48	-	13	3/8 UNC	-	J	
	07-111	13	48	-	13	3/8 UNC	3/8" NTP	J	
MERCUISER 1,7 TDI	07-230	16	30	13	10	-	1/2" NTP		
	07-231	16	31	13	10	-	-		
RUGGERINI	07-620	20	23	-	-	-	-		
YAMAHA	07-625	20	39	-	11	M8	-		
VOLVO	07-040	16	30	-	10	7/16 UNC	-		
	07-630	16	30	-	10	7/16 UNC	1/2" NTP		
	07-631	16	40	-	10	7/16 UNC 14g	-		
	07-632	16	40	-	10	7/16 UNC 14g	1/2" NTP		
	07-633	16,5	13	-	10	5/16 UNC	-		
	07-634	25	44	-	10	3/8 UNC	-		
	07-635	25	44	-	10	3/8 UNC	1" NTP		
YANMAR	07-080	20	20	-	8	M8	-	J	
	07-651	20	37	-	8	M8	-	J	
	07-652	20	55	-	8	M8	-	J	
	07-653	21/30	40	-	15	M8	-	J	
	07-654	23	40	-	8	M8	-	J	
	07-655	30	40	-	8	M8	-	J	
	07-656	40	40	-	15	M10	-	J	
44150	07-657	12	31	-	10	3/8 UNC 16g	-		
	07-658	12	31	-	10	3/8 UNC	3/8" NTP		hlad. olja-vode 4 kos/m
18790	07-659	16	50	-	12	7/16 UNC	-		
	07-660	16	50	-	12	7/16 UNC	1/2" NTP		intercooler 2 kos/motor
KOBOTA	07-668	10	20	8,1	9	-	1/4" NTP		vsi modeli
Generator KHELLER	07-669	10	18	8	8	-	1/4" NTP		
Generator MASE	07-168	10	18	8	8	-	1/4" NTP		
OSTALI	07-670	10	23	8,1	9	-	1/4" G		
	07-671	16	50	15	12	-	1/2" G		
	07-672	20	80	-	12	M16 x 1,5	3/4" G		
	07-673	16	50	-	12	M16 x 1,5	3/4" G		
	07-680	13	45	-	10	M10	-		
	07-681	13	40	-	9,5	3/8 UNC	-		
	07-682	15	50	-	12	M10	-		
	07-683	9	40	-	10	5/16 UNC	-		
	07-684	9	40	-	10	5/16 UNC	1/4" G		
	07-151	10	50			5/16 18g			

Prilžujemo si pravico do sprememb!



izdelava cink protektorjev,
pogonskih osi,
strojnih elementov in naprav

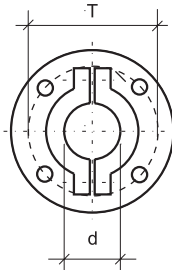
POGONSKA GRED VIJAKA 11.010 - 11.200



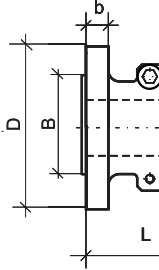
TIP	glej spisek								
D	22	25	28	30	32	35	40	45	50
L	*	1000	*	1000	1500	1500	1500	1500	1500
L	*	1250	*	1250	2000	2000	2000	2000	2000
L	*	1500	*	1500	*	*	*	*	*
L	*	2000	*	2000	*	*	*	*	*

* ... po naročilu
standardni konus 1 : 10

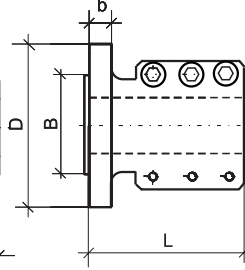
PRIROBNICA 10.022 - 10.450



10.022 - 10.030



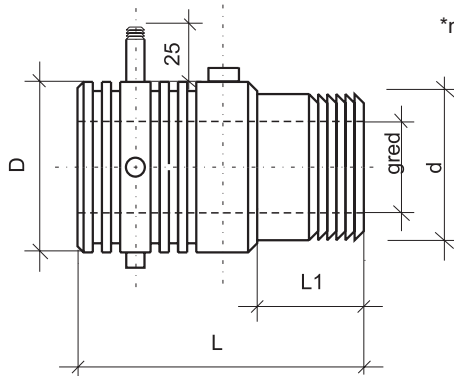
10.125 - 10.450



TIP	125	130	132	230	235	440	450	535	540	545	550
D	102	102	102 / 127	102 / 127	102 / 127	127 / 146	127 / 146	152 / 160	152 / 160	152 / 160	152 / 160
d	25	30	32	30	35	45	50	35	40	45	50
b	12	12	12	14	14	14	15	14	15	14	14
L	92	92	92	100	100	100	100	120	120	120	120
št. vijakov M/n	6 x M8	6 x M8	6 x M8	6 x M10	6 x M10	6 x M10	6 x M10	6 x M12	6 x M12	6 x M12	6 x M12

*Dimenzije D, T, B glede na tip menjalnika

INOX NOTRANJI LEŽAJ 14.122 - 14.150



*na ohišju priključek za hlajenje motorja 1/2"

TIP	122-135	140	145	150
D	57	62	80	80
gred	22-35	40	45	50
d	50	62	70	70
L	90	170	180	180
L1	35	*	*	*

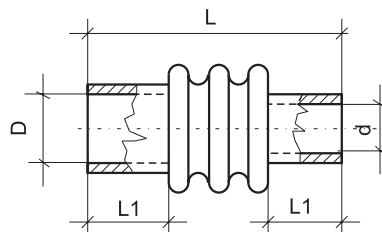
Ostale izvedbe po naročilu !

SUHI NOTRANJI LEŽAJ 14.225 - 14.240 za GRED $\phi 25 - \phi 30$ in $\phi 35 - \phi 40$



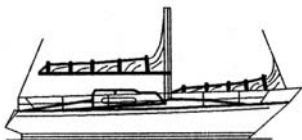
TIP	225	230	235	240
D	50	56	60	66
gred	25	30	35	40
d	42	50	54	60
L	115	115	180	180
L1	35	35	50	50

ELASTIČNA GUMI SPOJKA 15.010 - 15.050



TIP	010	020	021	030	034	036	038	040	050	060	070	080
d	42	48	50	50	54	60	60	66	60	70	70	80
D	50	56	50	56	60	60	66	66	74	70	80	80
L1	45	45	45	45	45	50	50	60	60	60	60	60
L	110	110	110	110	110	180	180	180	190	190	190	190

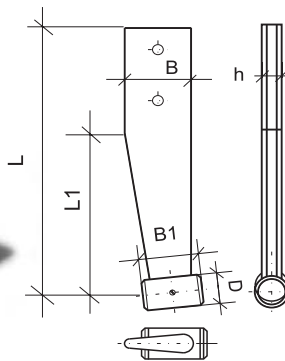
Ostale izvedbe po naročilu!



BRONASTI NOSILEC VIJAKA 17.251 - 17.501



INOX NOSILEC VIJAKA 17.250 - 17.350

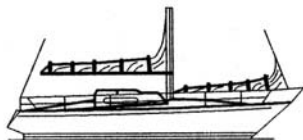


TIP	250	300	350	251	301	351	352*	401	402	501**
L	400	430	430	400	400	450	500	500	700	700
L1	260	260	260	220	260	450	500	500	400	400
D	50	58	58	53	58	69	69	80	80	95
B	100	115	115	100	115	140	140	140	150	170
B1	100	120	120	100	120	140	140	160	180	200
h	26	26	26	20	25	36	36	40	40	44
Za GRED	25	30	35	25	30	35	35	40	45	50

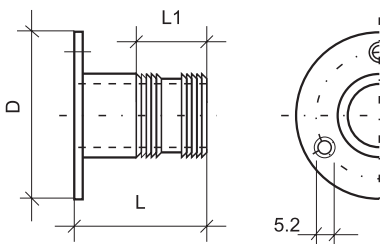
* Shipman 50,63
** Shipman 72,80

Ostale izvedbe po naročilu!

Pridržujemo si pravico do sprememb !



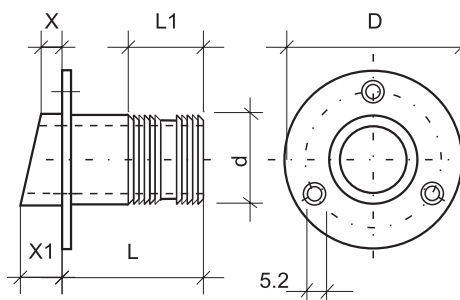
INOX IZPUST 21.100 - 21.800



TIP	100	120	160	200	250	300	400	450	510	600	700	750	800
D	40	40	40	51	50	62	70	70	80	100	115	115	200
d	10	12	16	20	25	30	40	45	50	60	70	75	80
L	40	40	45	50	50	60	60	60	60	70	70	70	70
L1	20	20	25	25	25	25	30	30	30	30	30	30	30
n*	3	3	3	3	3	3	3	3	3	6	6	6	6

*število izvrtin!

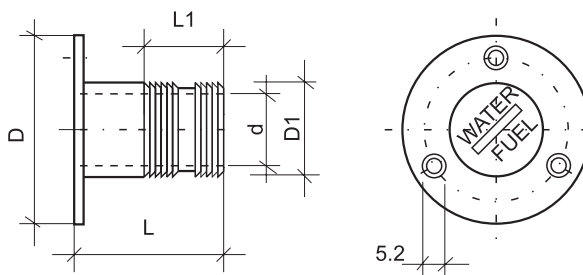
INOX IZPUH 22.300 - 22.800



TIP	300	400	450	510	600	700	750	800
D	62	70	70	80	100	115	115	120
d	30	40	45	50	60	70	75	80
L	45	60	60	60	70	70	70	70
L1	25	30	30	30	30	30	30	30
X	8	10	10	10	10	12	12	12
X1	16	20	20	30	30	35	35	35
n*	3	3	3	3	6	6	6	6

*število izvrtin!

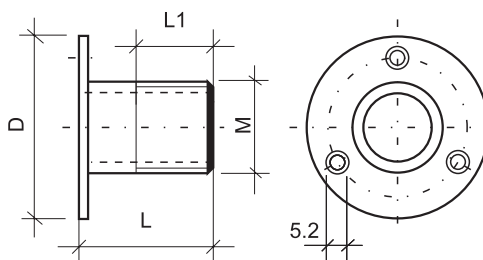
INOX NALIV VODE - GORIVA 23.040 - 23.051



TIP	040*	051
D	70	80
D1	40	50
d	37	48
L	60	60
L1	30	30

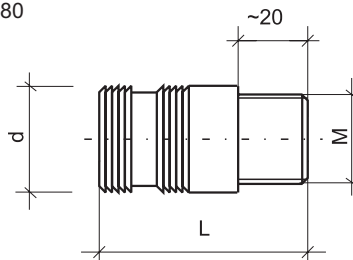
*za standardno nalivko!

INOX IZPUST Z NAVOJEM 24.170 - 24.480

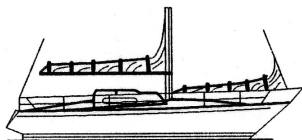


TIP	170	210	260	330	420	480
D	40	50	50	62	70	80
M	3/8"	1/2"	3/4"	1"	1 1/4"	1 1/2"
L	50	50	50	50	55	55
L1	20	20	25	25	25	25

INOX PRIKLJUČEK ZA GIBKO CEV 25.012 - 25.580



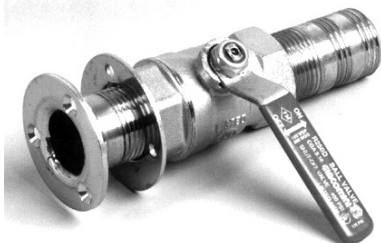
TIP	d	M	L	TIP	d	M	L
012	12	1/4"	50	316	16	3/4"	60
110	10	3/8"	50	320	20	3/4"	60
112	12	3/8"	50	325	25	3/4"	60
114	14	3/8"	50	416	16	1"	60
116	16	3/8"	50	420	20	1"	60
212	12	1/2"	50	425	25	1"	60
216	16	1/2"	50	430	30	1"	60
220	20	1/2"	50	440	40	1 1/4"	60
312	12	3/4"	60	580	40	1 1/2"	60



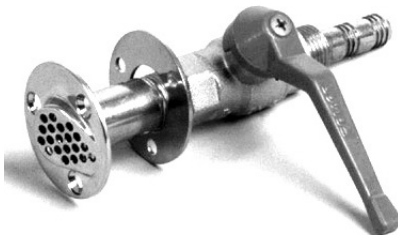
POVHE-NAVTIKA

izdelava cink protektorjev,
pogonskih osi,
strojnih elementov in naprav

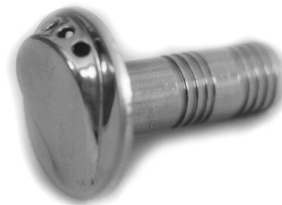
Inox izpust z ventilom in priključkom za cev
24.170 - 24.480 25.012 - 25.580



Inox sesalni koš
23.020 - 23.027 25.212 - 25.220



Inox zračnik ϕ 10, ϕ 12
23.104 - 23.124



Inox zračnik rozeta ϕ 40 23.004



Inox usisna mrežica ϕ 50 23.005



Varovalne podložke propelerja
16.010 - 16.060

ϕ 18,5 / ϕ 37
 ϕ 20,5 / ϕ 45
 ϕ 24,5 / ϕ 50
 ϕ 24,8 / ϕ 55
 ϕ 33,2 / ϕ 65
 ϕ 37,2 / ϕ 75



Sesalna košara z ventilom - inox razstavljiva
23.201 1/2"
23.271 3/4"
23.331 1"
23.421 1 1/4"



Sesalna košara - inox razstavljiva
23.200 1/2"
23.270 3/4"
23.330 1"
23.420 1 1/4"



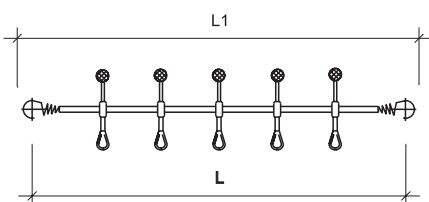
Matica vijaka z nastavkom za Zn anodo
09.110 - 09.160



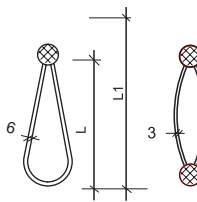
Pridržujemo si pravico do sprememb!

SPENJAČ - GOSENICA 27.200-27.350

SPENJAČ 6 28.630-28.660 SPENJAČ 3/2 28.233-28.236



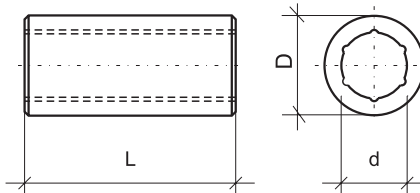
TIP	200	250	300	350
L	200	250	300	350
L1	350	430	520	600
n*	5	6	7	8



TIP	L/L1	kos	TIP	L/L1	kos
SU6	30/50	3	SU3/2	30/70	3
SU6	40/70	3	SU3/2	40/90	3
SU6	50/90	3	SU3/2	50/110	3
SU6	60/110	3	SU3/2	60/130	3

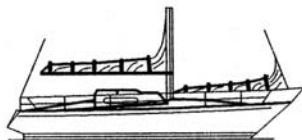
*število krakov!

LEŽAJ GREDI KRMILA 08.022 - 08.035



TIP	022	025	028	030	032	035	040	045	050
d	22	25	28	30	32	35	40	45	50
D	36	38	40	44	44	48	54	60	65
L	80	80	80	80*	80*	140	160	180	200

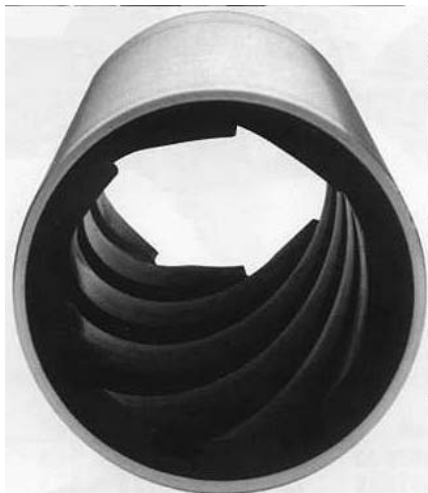
*L=L+0.5L



ZASTOPAMO PROGRAM FIRME CARAVEL

Caravel Caravel Caravel

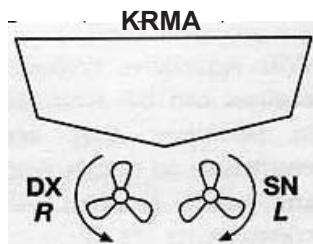
LEŽAJI OSI S PLAŠČEM IZ BRONA IN Z GUMIJASTO TEKALNO POVRŠINO. KER JE BRONASTO OHIŠJE TANJŠE OD PLASTIČNEGA IMA LEŽAJ DEBELEJŠO GUMIJASTO TEKALNO POVRŠINO, KAR BOLJE ABSORBIRA VIBRACIJE OZIROMA TRESLJAJE



POZOR !

DESNI LEŽAJ R oz DX SE UPORABLJA
V PRIMERU LEVEGA VRTENJA PROPELERJA

LEVI LEŽAJ L oz SN SE UPORABLJA
V PRIMERU DESNEGA VRTENJA PROPELERJA
GLEDANO PLOVILO V KRMO



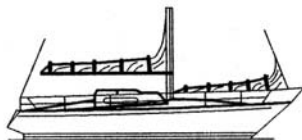
ZA NOVOGRADNJO UPORABLJATI
METRIČNE LEŽAJE TIP: **AM**

TIP: AM milimetri

TIP	Notranji premer mm	Zunanji premer mm	L mm
8 AM-20	20	35	80
8 AM-22	22	35	88
8 AM-25	25	40	100
8 AM-28	28	42	112
8 AM-30	30	45	120
8 AM-35	35	50	140
8 AM-38	38	55	152
8 AM-40	40	55	160
8 AM-42	42	60	168
8 AM-44	44	68	180
8 AM-45	45	65	180
8 AM-50	50	70	200
8 AM-55	55	75	220
8 AM-60	60	80	240
8 AM-65	65	85	260
8 AS/AM-70	70	90	280
8 AM-75	75	95	300
8 AM-80	80	100	320
8 AM-85	85	105	340
8 AM-90	90	110	360
8 AM-95	95	115	380
10 AM-100	100	125	400
10 AM-115	115	145	460
10 AM-120	120	155	480

TIP: AS milimetri

TIP	Notranji premer mm	Zunanji premer mm	L mm
8 AS-20	20	30	80
8 AS-25	25	35	100
8 AS-28	28	38	112
8 AS-30	30	40	120
8 AS-32	32	45	128
8 AS-35	35	48	140
8 AS-40	40	56	168
8 AS-45	45	61	180
8 AS-50	50	65	200
8 AS-55	55	73	220
8 AS-60	60	78	240
8 AS-65	65	83	260
8 AS/AM-70	70	90	280
8 AS-75	75	96	300
8 AS-80	80	102	320
8 AS-85	85	110	340
8 AS-90	90	115	360
8 AS-95	95	123	380
8 AS-100	100	130	400
10 AS-105	105	130	420
10 AS-110	110	135	440
10 AS-115	115	140	460
10 AS-120	120	140	480
10 AS-125	125	150	500



TR

POVHE-NAVTIKA

LIST 16

izdelava cink protektorjev,
pogonskih osi,
strojnih elementov in naprav

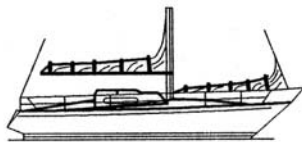
TIP AR metrična notranja mera - colska zunanja mera

TIP	premer osi	zunanji premer	dolžina
8 AR-20	= 20 mm	1" 1/4 = 31,75 mm	= 76,20
8 AR-22	= 22 mm	1" 1/4 = 31,75 mm	= 76,20
8 AR-25A	= 25 mm	1" 1/4 = 31,75 mm	= 101,60
8 AR-25	= 25 mm	1" 1/2 = 38,10 mm	= 101,60
8 AR-28	= 28 mm	1" 5/8 = 41,27 mm	= 114,30
8 AR-30	= 30 mm	1" 3/4 = 44,45 mm	= 114,30
8 AR-32	= 32 mm	1" 3/4 = 44,45 mm	= 127,00
8 AR-35	= 35 mm	1" 7/8 = 47,62 mm	= 127,00
8 AR-38	= 38 mm	2" = 50,80 mm	= 139,70
8 AR-40	= 40 mm	2" 1/8 = 53,97 mm	= 152,00
8 AR-45	= 45 mm	2" 3/8 = 60,32 mm	= 160,00
8 AR-50	= 50 mm	2" 5/8 = 66,67 mm	= 177,80
8 AR-55	= 55 mm	3" = 76,20 mm	= 203,20
8 AR-60	= 60 mm	3" 1/4 = 82,55 mm	= 228,60
8 AR-65	= 65 mm	3" 3/8 = 85,72 mm	= 241,30
8 AR-70	= 70 mm	3" 3/4 = 95,25 mm	= 266,70
8 AR-75	= 75 mm	4" = 101,60 mm	= 279,40
8 AR-80	= 80 mm	4" = 101,60 mm	= 304,80
8 AR-85	= 85 mm	4" 1/2 = 114,30 mm	= 342,90
8 AR-90	= 90 mm	4" 1/2 = 114,30 mm	= 355,60
8 AR-95	= 95 mm	4" 1/2 = 114,30 mm	= 380,00
8 AR-100	= 100 mm	5" 1/4 = 133,35 mm	= 400,00
10 AR-105	= 105 mm	5" 1/4 = 133,35 mm	= 406,40
10 AR-110	= 110 mm	5" 1/2 = 139,70 mm	= 431,80
10 AR-115	= 115 mm	5" 1/2 = 139,70 mm	= 457,20
10 AR-120	= 120 mm	6" 1/8 = 155,57 mm	= 482,60
10 AR-125	= 125 mm	6" 1/8 = 155,57 mm	= 503,00

TIP AS colske mere

TIP	premer osi	zunanji premer	dolžina
8 AS-1"	1" = 25,4 mm	1"1/2 = 38,10 mm	4" = 101,6
8 AS-1"1/8	1"1/8 = 28,6 mm	1"5/8 = 41,27 mm	4"1/2 = 114,3
8 AS-1"1/4	1"1/4 = 31,8 mm	1"3/4 = 44,45 mm	5" = 127,0
8 AS-1"3/8	1"3/8 = 34,9 mm	1"7/8 = 47,62 mm	5"1/2 = 139,7
8 AS-1"1/2	1"1/2 = 38,1 mm	2" = 50,80 mm	6" = 152,4
8 AS-1"5/8	1"5/8 = 41,3 mm	2"1/8 = 53,97 mm	6"1/2 = 165,1
8 AS-1"3/4	1"3/4 = 44,5 mm	2"3/8 = 60,32 mm	7" = 177,8
8 AS-1"7/8	1"7/8 = 47,6 mm	2"5/8 = 66,67 mm	7"1/2 = 190,5
8 AS-2"	2" = 50,8 mm	2"5/8 = 66,67 mm	8" = 203,2
8 AS-2"1/8	2"1/8 = 54,0 mm	3" = 76,20 mm	8"1/2 = 215,9
8 AS-2"1/4	2"1/4 = 57,2 mm	3" = 76,20 mm	9" = 228,6
8 AS-2"3/8	2"3/8 = 60,3 mm	3"1/4 = 82,55 mm	9"1/2 = 241,3
8 AS-2"1/2	2"1/2 = 63,5 mm	3"1/4 = 82,55 mm	10" = 254,0
8 AS-2"5/8	2"5/8 = 66,7 mm	3"3/8 = 85,72 mm	10"1/2 = 266,7
8 AS-2"3/4	2"3/4 = 69,1 mm	3"3/4 = 95,25 mm	11" = 279,4
8 AS-2"7/8	2"7/8 = 73,0 mm	3"3/4 = 95,25 mm	12" = 304,8
8 AS-3"	3" = 76,2 mm	4" = 101,60 mm	12" = 304,8
8 AS-3"1/4	3"1/4 = 82,6 mm	4" = 101,60 mm	12" = 304,8
8 AS-3"3/8	3"3/8 = 85,7 mm	4"1/2 = 114,30 mm	13"1/2 = 342,9
8 AS-3"1/2	3"1/2 = 88,9 mm	4"1/2 = 114,30 mm	14" = 355,6
8 AS-3"5/8	3"5/8 = 92,1 mm	4"1/2 = 114,30 mm	14"1/2 = 368,3
8 AS-3"3/4	3"3/4 = 95,3 mm	4"1/2 = 114,30 mm	15" = 381,0
8 AS-3"7/8	3"7/8 = 98,4 mm	5"1/4 = 133,35 mm	16" = 406,4
8 AS-4"	4" = 101,6 mm	5"1/4 = 133,35 mm	16" = 406,4
10 AS-4"1/8	4"1/8 = 104,8 mm	5"1/4 = 133,35 mm	16"1/2 = 419,1
10 AS-4"1/4	4"1/4 = 108,0 mm	5"1/2 = 139,70 mm	17" = 431,8
10 AS-4"3/8	4"3/8 = 111,1 mm	5"1/2 = 139,70 mm	17"1/2 = 444,5
10 AS-4"1/2	4"1/2 = 114,3 mm	5"1/2 = 139,70 mm	17"1/2 = 444,5
10 AS-4"5/8	4"5/8 = 117,5 mm	6"1/8 = 155,57 mm	18"1/2 = 469,9
10 AS-4"3/4	4"3/4 = 120,7 mm	6"1/8 = 155,57 mm	19" = 482,6
10 AS-4"7/8	4"7/8 = 123,8 mm	6"1/8 = 155,57 mm	19"1/2 = 495,3
10 AS-5"	5" = 127,0 mm	6"1/8 = 155,57 mm	20" = 508,0

URL: povhenavtika.4mg.com
e-mail: povhenavtika@gmail.com**POVHE**VINJE 122 1262 DOL PRI LJUBLJANI, SLO
TEL/FAX: 01 5647-392 GSM: 041 667-688



TIP AM colske mere

LEŽAJI OSIS PLAŠČEM IZ BRONA IN Z GUMIJASTO TEKALNO POVRŠINO

TIP	premer osi	zunanj premer	dolžina
8 AM-7/8"	7/8" = 22,22 mm	1"1/4 = 31,75 mm	3"1/2 = 88,90 mm
8 AM-7/8"	= 22,22 mm	1"3/8 = 34,92 mm	3"1/2 = 88,90 mm
8 AM-7/8"	= 22,22 mm	1"1/2 = 38,10 mm	3"1/2 = 88,90 mm
8 AM-1"	1" = 25,40 mm	1"1/4 = 31,75 mm	4" = 101,60 mm
8 AM-1"	= 25,40 mm	1"3/8 = 34,92 mm	4" = 101,60 mm
8 AM-1"	= 25,40 mm	1"5/8 = 41,27 mm	4" = 101,60 mm
8 AM-1"	= 25,40 mm	2" = 50,80 mm	4" = 101,60 mm
8 AM-1"1/8	1"1/8 = 28,57 mm	1"1/2 = 38,10 mm	4"1/2 = 114,30 mm
8 AM-1"1/8	= 28,57 mm	1"3/4 = 44,45 mm	4"1/2 = 114,30 mm
8 AM-1"1/8	= 28,57 mm	2" = 50,80 mm	4"1/2 = 114,30 mm
8 AM-1"1/4	1"1/4 = 31,75 mm	1"1/2 = 38,10 mm	5" = 127,00 mm
8 AM-1"1/4	= 31,75 mm	1"5/8 = 41,27 mm	5" = 127,00 mm
8 AM-1"1/4	= 31,75 mm	2" = 50,80 mm	5" = 127,00 mm
8 AM-1"1/4	= 31,75 mm	2"1/8 = 53,97 mm	5" = 127,00 mm
8 AM-1"3/8	1"3/8 = 34,92 mm	2" = 50,80 mm	5"1/2 = 139,70 mm
8 AM-1"3/8	= 34,92 mm	2"1/8 = 53,97 mm	5"1/2 = 139,70 mm
8 AM-1"3/8	= 34,92 mm	2"3/8 = 60,32 mm	5"1/2 = 139,70 mm
8 AM-1"1/2	1"1/2 = 38,10 mm	2"3/8 = 60,32 mm	6" = 152,40 mm
8 AM-1"5/8	1"5/8 = 41,27 mm	2"5/8 = 66,67 mm	6"1/2 = 165,10 mm
8 AM-1"3/4	1"3/4 = 44,45 mm	2"5/8 = 66,67 mm	7" = 177,80 mm
8 AM-1"7/8	1"7/8 = 47,62 mm	2"15/16 = 74,61 mm	7"1/2 = 190,50 mm
8 AM-2"	2" = 50,80 mm	2"3/4 = 69,85 mm	8" = 203,20 mm
8 AM-2"	= 50,80 mm	3" = 76,20 mm	8" = 203,20 mm
8 AM-2"1/8	2"1/8 = 53,97 mm	2"3/4 = 69,85 mm	8"1/2 = 215,90 mm
8 AM-2"1/8	= 53,97 mm	2"15/16 = 74,61 mm	8"1/2 = 215,90 mm
8 AM-2"1/8	= 53,97 mm	3"1/8 = 79,37 mm	8"1/2 = 215,90 mm
8 AM-2"1/4	2"1/4 = 57,15 mm	2"15/16 = 74,61 mm	9" = 228,60 mm
8 AM-2"1/4	= 57,15 mm	3"1/8 = 79,37 mm	9" = 228,60 mm
8 AM-2"1/4	= 57,15 mm	3"3/8 = 85,72 mm	9" = 228,60 mm
8 AM-2"3/8	2"3/8 = 60,32 mm	3" = 76,20 mm	9"1/2 = 241,30 mm
8 AM-2"3/8	= 60,32 mm	3"1/8 = 79,37 mm	9"1/2 = 241,30 mm
8 AM-2"3/8	= 60,32 mm	3"3/8 = 85,72 mm	9" = 228,60 mm
8 AM-2"1/2	2"1/2 = 63,50 mm	3" = 76,20 mm	10" = 254,00 mm
8 AM-2"1/2	= 63,50 mm	3"1/8 = 79,37 mm	10" = 254,00 mm
8 AM-2"1/2	= 63,50 mm	3"3/8 = 85,72 mm	10" = 254,00 mm
8 AM-2"1/2	= 63,50 mm	3"1/2 = 88,90 mm	10" = 254,00 mm
8 AM-2"5/8	2"5/8 = 66,67 mm	3"1/2 = 88,90 mm	10"1/2 = 266,70 mm
8 AM-2"3/4	2"3/4 = 69,85 mm	3"3/8 = 85,72 mm	11" = 279,40 mm
8 AM-2"3/4	= 69,85 mm	3"1/2 = 88,90 mm	11" = 279,40 mm
8 AM-2"7/8	2"7/8 = 73,02 mm	3"1/2 = 88,90 mm	11"1/2 = 292,10 mm
8 AM-3"	3" = 76,20 mm	3"3/4 = 95,25 mm	12" = 304,80 mm
8 AM-3"	= 76,20 mm	3"7/8 = 98,42 mm	12" = 304,80 mm
8 AM-3"1/8	3"1/8 = 79,37 mm	4"1/2 = 114,30 mm	12"1/2 = 317,50 mm
8 AM-3"1/4	3"1/4 = 82,55 mm	4"1/4 = 107,95 mm	13" = 330,20 mm
8 AM-3"3/8	3"3/8 = 85,72 mm	4"1/8 = 104,77 mm	13"1/2 = 342,90 mm
8 AM-3"1/2	3"1/2 = 88,90 mm	4"1/4 = 107,95 mm	14" = 355,60 mm
8 AM-3"3/4	3"3/4 = 95,25 mm	5" = 127,00 mm	15" = 381,00 mm
8 AM-3"3/4	= 95,25 mm	5"1/4 = 133,35 mm	15" = 381,00 mm
10 AM-4"	4" = 101,60 mm	5" = 127,00 mm	16" = 406,40 mm
10 AM-4"1/4	4"1/4 = 107,95 mm	5"1/4 = 133,35 mm	17" = 431,80 mm
10 AM-4"3/8	4"3/8 = 111,12 mm	5"3/4 = 146,04 mm	17"1/2 = 444,50 mm
10 AM-4"1/2	4"1/2 = 114,30 mm	5"5/8 = 142,87 mm	18" = 457,20 mm
10 AM-4"1/2	= 114,30 mm	5"3/4 = 146,04 mm	18" = 457,20 mm
10 AM-4"3/4	4"3/4 = 120,65 mm	6" = 152,39 mm	19" = 482,60 mm
10 AM-5"	5" = 127,00 mm	6"1/2 = 165,09 mm	20" = 508,00 mm

Pridržujemo si pravico do sprememb!